



**REGIONAL SPECIALISED METEOROLOGICAL CENTRE-TROPICAL CYCLONES, NEW DELHI  
TROPICAL WEATHER OUTLOOK**

**DEMS-RSMC TROPICAL CYCLONES NEW DELHI DATED 11.12.2024**

**TROPICAL WEATHER OUTLOOK FOR THE NORTH INDIAN OCEAN (THE BAY OF BENGAL AND THE ARABIAN SEA) VALID FOR THE NEXT 168 HOURS ISSUED AT 0600 UTC OF 11.12.2024 BASED ON 0300 UTC OF 11.12.2024.**

**BAY OF BENGAL:**

Yesterday's well-marked low-pressure area over southeast Bay of Bengal & adjoining Equatorial Indian Ocean lay over southwest Bay of Bengal off Sri Lanka coast at 0300 UTC of today, the 11<sup>th</sup> December 2024 with the associated upper air cyclonic circulation extending up to mid-tropospheric levels. The system is very likely to continue to move west-northwestwards towards Sri Lanka-Tamil Nadu coasts during the next 24 hours. Associated scattered to broken low and medium clouds with embedded intense to very intense convection lay over central and south Bay of Bengal adjoining equatorial Indian ocean between latitude 2.0 deg N to 16.0 deg N and longitude 80.0 deg E to 93.0 deg E. Minimum cloud top temperature is minus 75 to 85 deg Celsius.

Scattered low and medium clouds with embedded intense to very intense convection lay over central & south Bay of Bengal and south Andaman Sea. Scattered low and medium clouds with embedded moderate to intense convection lay over central north Andaman Sea, Tenasserim coast and isolated weak to moderate convection lay over North Bay of Bengal.

**\*PROBABILITY OF CYCLOGENESIS (FORMATION OF DEPRESSION) DURING NEXT 168 HRS:**

| 24 HOURS | 24-48 HOURS | 48-72 HOURS | 72-96 HOURS | 96-120 HOURS | 120-144 HOURS | 144-168 HOURS |
|----------|-------------|-------------|-------------|--------------|---------------|---------------|
| NIL      | NIL         | NIL         | NIL         | NIL          | NIL           | NIL           |

**\*NOTE: EVERY 24HR FORECAST IS VALID UPTO 0300 UTC (0830 IST) OF NEXT DAY**

**ARABIAN SEA:**

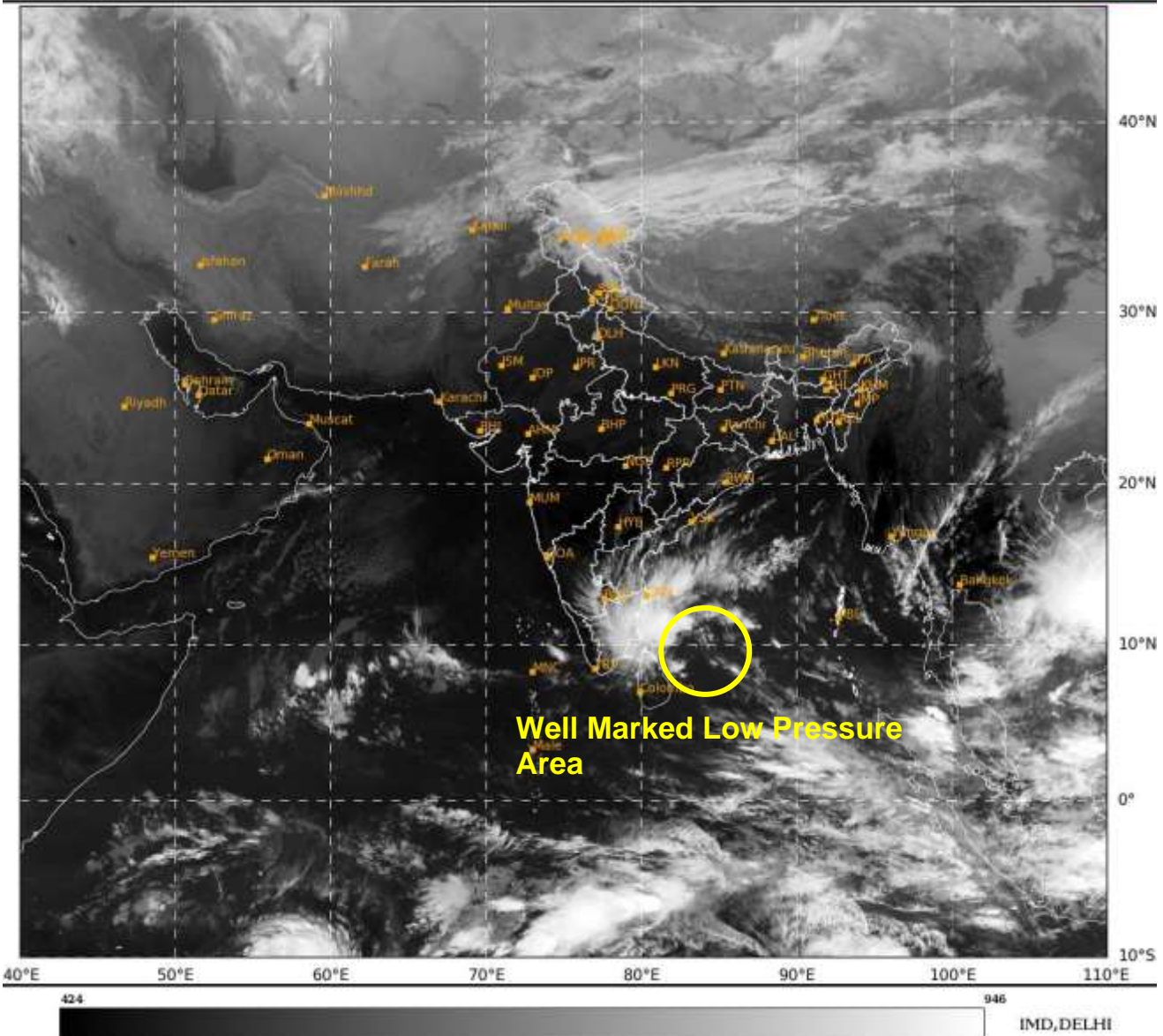
Scattered low and medium clouds with embedded moderate to intense convection lay over southwest Arabian Sea, Lakshadweep Island area & Comorin area. Scattered low and medium clouds with embedded isolated weak to moderate convection lay over southeast & westcentral Arabian Sea.

**\*PROBABILITY OF CYCLOGENESIS (FORMATION OF DEPRESSION) DURING NEXT 168 HRS:**

| 24 HOURS | 24-48 HOURS | 48-72 HOURS | 72-96 HOURS | 96-120 HOURS | 120-144 HOURS | 144-168 HOURS |
|----------|-------------|-------------|-------------|--------------|---------------|---------------|
| NIL      | NIL         | NIL         | NIL         | NIL          | NIL           | NIL           |

**\*NOTE: EVERY 24HR FORECAST IS VALID UPTO 0300 UTC (0830 IST) OF NEXT DAY**

**REMARKS: NIL**



Cloud distribution: (a) Isolated: <25%, Scattered:25-50%, Broken: 51-75%, Solid:>75%, Convection Intensity: (a) Weak: Cloud Top Temperature (CTT) >-25°C, (b) Moderate: CTT: - 25°C to -40°C, (c) Intense: CTT: - 41°C to -70°C and (d) Very Intense: : Less than -70°C  
PROBABILITY OF CYCLOGENESIS (FORMATION OF DEPRESSION):NIL: 0%, LOW: 1-33%, , MODERATE: 34-66% AND HIGH: 67-100%  
This is a guidance Bulletin for WMO/ESCAP Panel Member countries. Visit respective National websites for Country specific Bulletins